

## Colour Scanner

- Colour Scanning with Flatbed and Automatic Document Feeder
- 9600 dpi (Interpolated) Scanning Capability
- 24-bit Colour Output, 8-bit Monochrome Output
- TWAIN Compatible
- Scan to PC as PDF, JPEG or TIFF\*4
- Convert Scanned Pages to Editable Documents with Readiris OCR Software\*4
- Easy-to-Use Image Viewer\*4

## Laser Printer

- High-Speed 18 ppm Print Speed
- 600 x 600 dpi Resolution
- Approx. 15-Second Warmup Time
- 250-Sheet Paper Capacity
- Multi-Purpose Tray
- USB 2.0 Interface
- Works with Microsoft® Windows® 98/Me/2000/XP

## Flatbed Copier

- Enhanced 600 dpi Laser Copy Quality
- Up to 18 cpm Copy Speed
- Multiple Copies: up to 99 from One Original
- Enlarge up to 200%, Reduce up to 50%
- Automatic Document Feeder (40 Sheets)



## Laser Fax

- 33.6 kbps Fax Modem
- Resolution: Standard/Fine/Super Fine/Photo
- Reception Memory with backup, up to 170 pages\*1,\*3
- Transmission Memory, up to 150 pages\*1,\*3
- 64-Level Photo Resolution
- Dual Access with Reserved Transmission
- Error Correction Mode (ECM)
- PC Fax\*4
- Junk Fax Prohibitor

## KX-FLB801E Specifications

### General Function

Type:	Desktop
Printing Process:	Laser
Standard Memory Capacity:	32 MB
PC Interface:	USB 2.0
Scanning System:	CCD image sensor, fixed flatbed
Caller ID Ready*5:	FSK
Dialing Mode:	Tone (DTMF)/pulse
Automatic Document Feeder:	40 sheets
Paper Tray:	250 sheets
Multi-Purpose Tray:	Labels, envelopes, coated paper, thick paper, transparency; Page by page insertion
Warmup Time:	Approx. 15 seconds (20°C)

### Printer Function

PC Interface:	USB 2.0
Printing Speed:	18 PPM
Printing Resolution:	600 x 600 dpi
Compatible OS:	98/Me/2000/XP
Emulation:	GDI
Paper Handling:	A4/letter/envelope

### Copier Function

First Copy Time:	Approx. 17 seconds (A4)
Memory Copy Speed:	18 CPM
Resolution:	600 x 600 dpi
Multi-Copy:	Up to 99 copies
Zoom (variable):	50% – 200% in 5% increments
Collate:	Sorter function

### Scanner Function

Colour Scanning:	Input 48 bits, output 24 bits
Monochrome Scanning:	Input 16 bits, output 8 bits
Scanning Resolution:	600 x 600 dpi (ADF)
	600 x 1200 dpi (Flatbed)
	9600 x 9600 dpi (interpolated)
Scanner Driver:	TWAIN 18

### Fax Function

Compatibility:	ITU T G3
Paper Handling:	A4
Scanning Width:	208 mm
Modem Speed:	33.6 kbps with automatic fallback
Transmission Speed:	Approx. 4 seconds per page*1,*2 in ECM-MMR memory transmission
Compression System:	MH / MR / MMR
Resolution:	Standard/fine/super fine/photo/photo with text
Halftone:	64 levels
Memory Transmission:	Max. 150 pages*3
Memory Reception:	Max. 170 pages*3

### Power Consumption:

Standby:	Approx. 11 W
Transmission:	Approx. 28 W
Reception:	Approx. 400 W
Copy:	Approx. 430 W
Maximum:	Approx. 900 W when the fuser lamp turns on
Power Source:	AC 220 - 240V, 50/60 Hz
Dimensions (W x D x H):	440 mm x 445 mm x 318 mm
Weight:	Approx. 15.5 kg

\*1 Based on ITU-T No.1 test chart.

\*2 5% coverage

\*3 Max. 170 pages for out-of-paper reception. Max. 150 pages for memory transmission.

\*4 Available when connected to PC running Microsoft® Windows® 98/Me/2000/XP. Multi-function software is included.

\*5 Requires subscription to fee-based phone company service.

\*6 The drum longevity is tested by 20-sheet continued printout intervals.

Microsoft and Windows are registered trademarks of Microsoft Corporation in the United States and/or other countries

## Option

KX-FA103X    Handset Unit



## Consumables

KX-FA85X    Toner Cartridge (5,000 pages\*1,\*5)  
KX-FA87X    Toner Cartridge (2,500 pages\*1,\*5)  
KX-FA86X    Drum Unit (Max. 10,000 pages\*6)

# Panasonic

Global Web Sites: <http://www.panasonic.co.jp/global>

Design and specifications are subject to change without notice. 0M0306UA-KX-FLB801-LT.E

# Panasonic

## ideas for life

# KX-FLB801E



- Flatbed Colour Scanner
- Up to 18 ppm Print Speed
- 600 x 600 dpi Print Resolution
- Up to 18 cpm Copy Speed
- 33.6 kbps Fax Modem

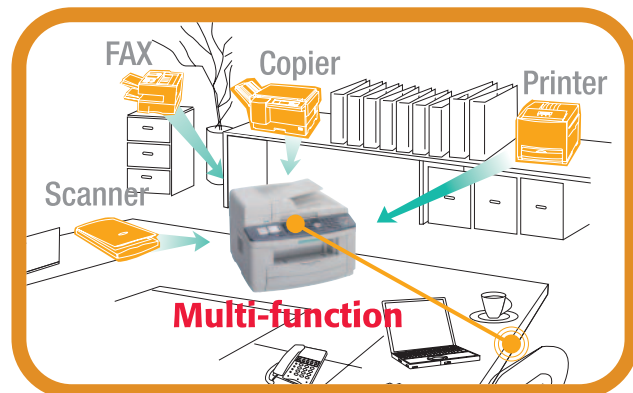


## Multi-Function

# Compact Multi-Function Power

## Multi-Function

"4-in-1" multi-function design dramatically improves business efficiency for every document-related task from faxing and copying to scanning and printing.



## Colour Scanner

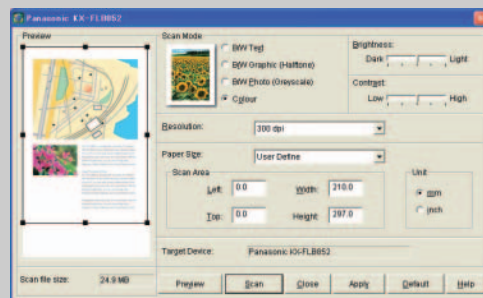
**Colour Scanning with Flatbed and ADF**  
The KX-FLB801E allows you to scan documents in colour or black-and-white at a high resolution of 600 x 1200 dpi (with flatbed), or 600 x 600 dpi with an 40-sheet Automatic Document Feeder. (Max. scanning resolution of 9600 x 9600 dpi is available when interpolation is used.)

### High-Quality Scanning

The KX-FLB801E outputs scanning images with 24-bit colour gradations (48-bit input), or 8-bit black & white gray scales (16-bit input).

### Image Processing Software

When the Multi-Function Station launcher software is installed on your PC, you can easily access a variety of image processing functions from the graphical menu. With the "Viewer (Scan)" menu, you can choose Page View, Reduction, Rotate, Duplicate, and Cut and Paste functions. OCR (Optical Character Reader) function is also available in 1-byte language designation models.



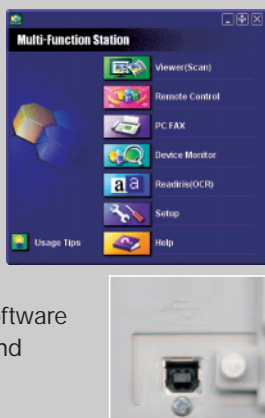
## Laser Printer

### Quality Laser Printing

The laser printer function helps assure high quality reproduction at 600 x 600 dpi resolution in every document and drawing you want to print or copy.

### USB 2.0 PC Interface

The KX-FLB801E comes standard with a USB 2.0 interface for easy connection to a PC. The bundled "Multi-Function Station" launcher software allows easy setup and selection of multiple functions.



### High-Speed 18-ppm Laser Printing

The KX-FLB801E boasts high-speed printing and copying at speeds of up to 18 pages per minute with quick warmup time.

### 250-Sheet Paper Tray

Since the standard paper tray can hold up to 250 sheets, you don't have to worry about running out of paper even during a high-volume print or fax job. For added flexibility, a Multi-Purpose Tray allows you manually feed of paper in various types and sizes (Label/Envelope/Coated Paper/Thick Paper/Transparency).



The KX-FLB801E boasts 4-in-1 multi-function capability in a single compact unit.

In addition to high-speed laser fax capability, it also functions as a digital copier, flatbed colour scanner, and 18-ppm PC printer.

It's the high-performance way to streamline your office and expand your business.

## Flatbed Copier

### Flatbed Design

In addition to the 40-sheet Automatic Document Feeder, a built-in flatbed allows you to scan, copy, or fax a variety of originals in different shapes or sizes such as magazines, newspapers, business cards, etc.

### High-Quality Image Reproduction

A built-in CCD (charge-coupled device) image sensor makes possible high-speed scanning and high-resolution image reproduction even when the spine is raised slightly above the glass plate.

### High-Resolution Digital Copier

With resolution of up to 600 x 600 dpi, sharp, clear copies are assured. Multiple copies of up to 99 sheets are possible.

### 18-cpm Copy Speed

The KX-FLB801E delivers high speed copying of up to 18 copies per minute with quick warmup time.

### Zoom Copy

Images can be enlarged by up to 200% or reduced by up to 50%. Collate function allows re-ordering of the copied output.



## Fax Features

### 33.6 kbps High-Speed Fax Modem

The Panasonic laser fax is designed for fast, efficient fax transmission at speeds up to 33.6 kbps (4 seconds per page\*1,\*2).

### Document Memory

This unit can store up to 150\*3 pages in its built-in memory. Ideal for broadcasting multi-page documents to multiple locations, this feature also enables out-of-paper reception of up to 170\*3 pages.

### Dual Access Operation

Even while the KX-FLB801E is busy sending or receiving a memory-based fax, you can store additional documents to send later.

### 64-Level Halftone with Digital Image Processing

You can send or copy everything from family photos to company documents with near-original quality, thanks to the clarity and detail of 64-level halftone reproduction.